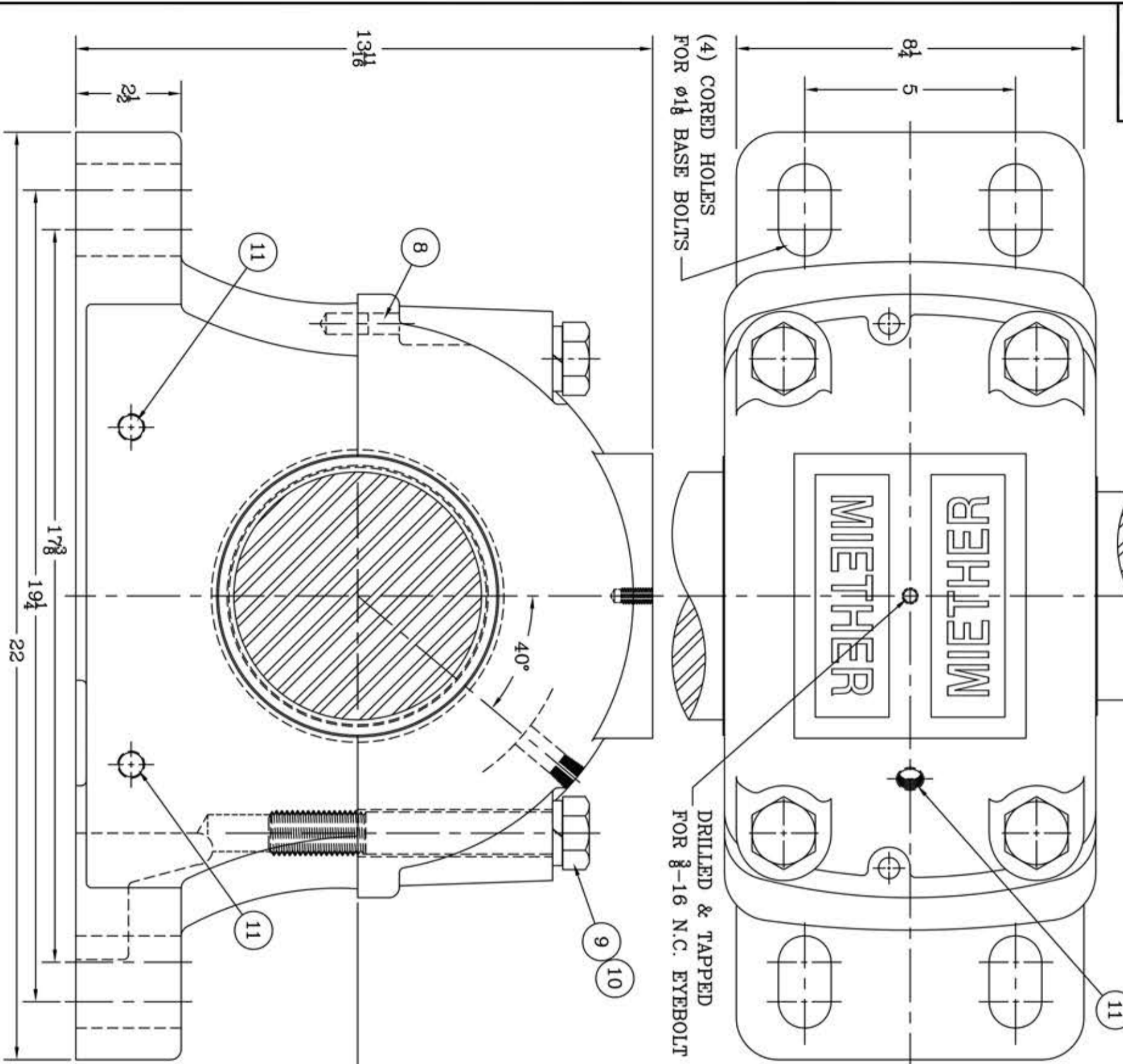
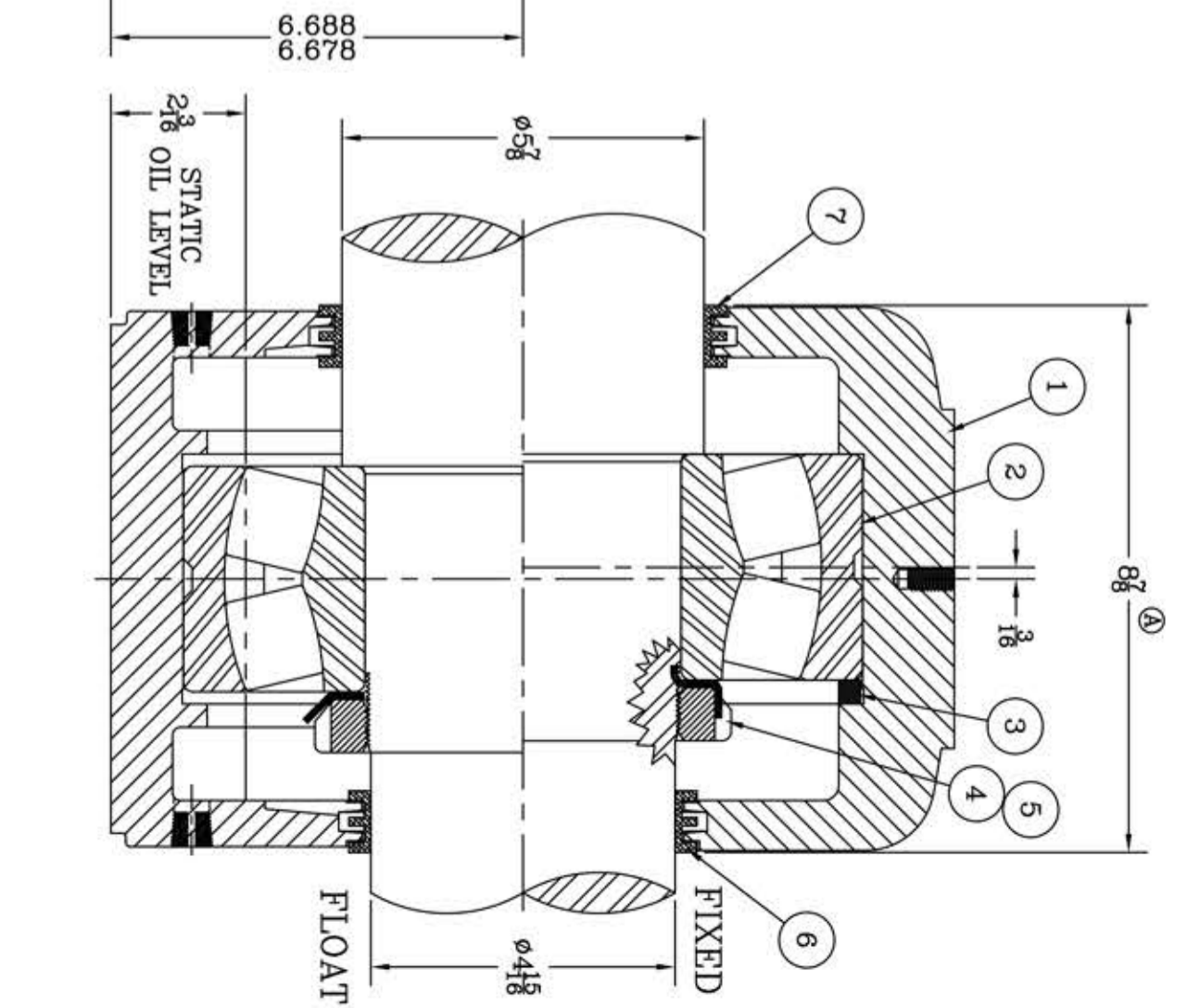


This drawing is the sole property of Miether Bearing Products and contains confidential and proprietary information. It is being provided to you for your use and may not be disclosed to any third party or used for any other purpose without Miether's prior written consent. The [materials] must be returned to the Company upon its demand. Your acceptance of these materials constitutes your acceptance of the foregoing terms.

C-14589



ITEM	DESCRIPTION	DETAIL	REQUIRED
1	HOUSING SDAF 326	C-15223-R	1 1
2	SPHERICAL ROLLER BEARING	22326/W-33	1 1
3	STABILIZING RING SR-0-26	A-10863	1 0
4	LOCKNUT AN-26		1 1
5	LOCKWASHER W-26		1 1
6	TRIPLE SEAL RING LER-122	A-10499	1 1
7	TRIPLE SEAL RING LER-136	A-10500	1 1
8	DOWEL	ø 1/2 x 1" LONG	2 2
9	CAP BOLT HEX. HEAD	1-8 NC x 7" LONG	4 4
10	LOCKWASHER	1" SPLIT MED.	4 4
11	PIPE PLUG	3/8-18 NPT	5 5



TOLERANCE: UNLESS OTHERWISE SPECIFIED
 FRACTIONS $\pm 1/32"$ ANGLES $\pm 0^\circ 30'$
 DECIMALS $\pm .005"$ WELD $\pm 1/16"$
 CASTING $\pm 1/16"$

A.I.S.I. STANDARD FINISHES
 SYMBOL VALUE
 C 16 D 32 E 63 F 125 G 250 J 500 K 1000

WAS 8 1/2
 RWB per KAB
 8-19-04
 REDRAWN ON
 COMPUTER
 RWB per KAB
 8-16-04

REVISIONS

NO.	DATE	DESCRIPTION
1		

AN ALCO INDUSTRIES COMPANY
 BEARING PRODUCTS
 ODessa, TX USA

SDAF 22326 05-14 x 04-15
 ASSEMBLY DRAWING
 SCALE HALF
 DRAWN CJ
 DATE 3/17/72
 CHECK:

ASSEMBLY NO.
 DRAWING NO. C-14589