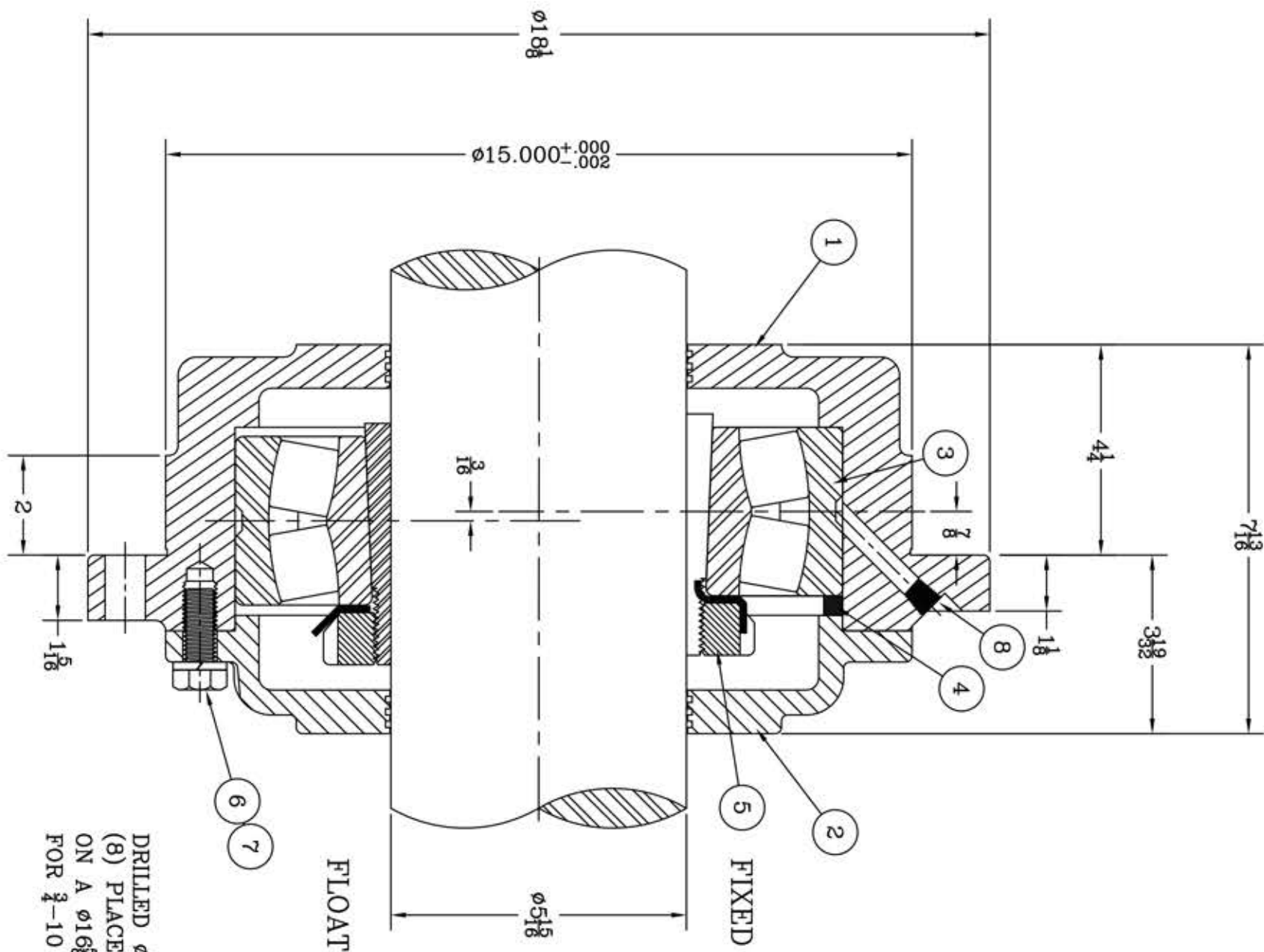
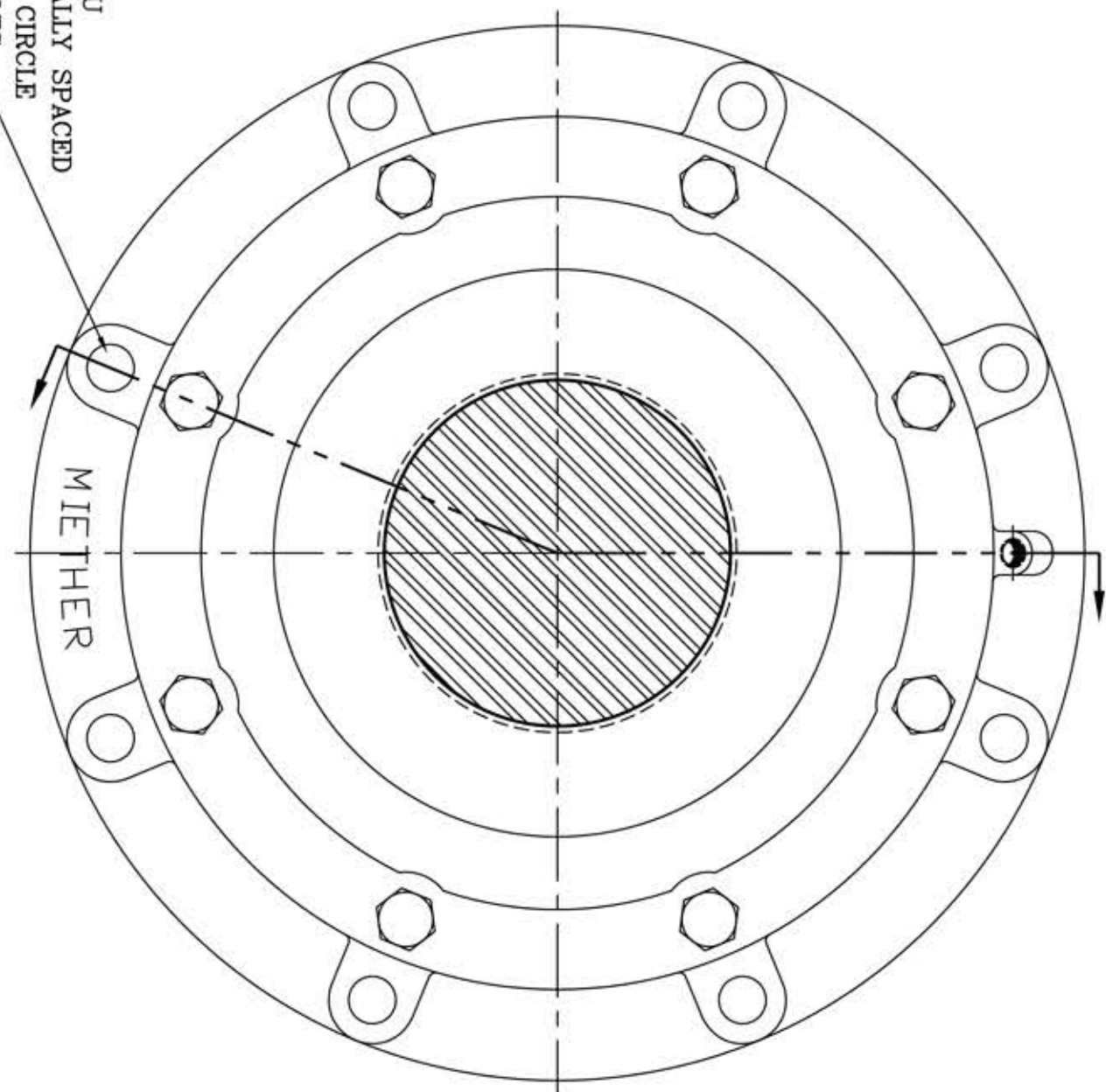


This drawing is the sole property of Miether Bearing Products and contains confidential and proprietary information. It is being provided to you for your use and may not be disclosed to any third party or used for any other purpose without Miether's prior written consent. The [materials] must be returned to the Company upon its demand. Your acceptance of these materials constitutes your acceptance of the foregoing terms.

C-12022



DRILLED $\phi\frac{1}{8}$ THRU
(8) PLACES EQUALLY SPACED
ON A $\phi 16\frac{1}{8}$ BOLT CIRCLE
FOR $\frac{3}{4}$ -10 NC BOLTS



ITEM	DESCRIPTION	DETAIL	QTY.
1	HOUSING HL-534	C-12177	1
2	ENDCAP KL-534	C-12178	1
3	SPHERICAL ROLLER BEARING	22234K	1
4	STABILIZING RING SR-34-0	A10609	1
5	ADAPTER SNW-34	24449	1
6	CAP BOLT HEX. HEAD	$\frac{3}{8}$ -11 NC x $1\frac{1}{8}$ LONG	8
7	LOCKWASHER	$\frac{3}{8}$ SPLIT MED.	8
8	PIPE PLUG	$\frac{1}{4}$ -18 NPT	1

REDRAWN FOR CONFORMITY RWB per KAB 9-12-03
REDRAWN ON COMPUTER by FM 12-16-97

REVISIONS

SYMBOL	VALUE	DESCRIPTION
C	16	ANGLES $\pm 0^\circ 30'$
D	32	WELD $\pm 1/16"$
E	63	WEED $\pm 1/16"$
F	125	WEED $\pm 1/16"$
G	250	WEED $\pm 1/16"$
J	500	WEED $\pm 1/16"$
K	1000	WEED $\pm 1/16"$

TOLERANCE: UNLESS OTHERWISE SPECIFIED
FRACTIONS $\pm 1/32"$
DECIMALS $\pm .005"$
CASTING $\pm 1/16"$
A.I.S.I. STANDARD FINISHES

AN ALCO INDUSTRIES COMPANY
BEARING PRODUCTS
ODESSA, TX. USA

FCL 22534	05-15
ASSEMBLY DRAWING	
SCALE HALF	ASSEMBLY NO.
DRAWN OMI	
DATE 9/29/94	DRAWING NO.
CHK:	C-12022