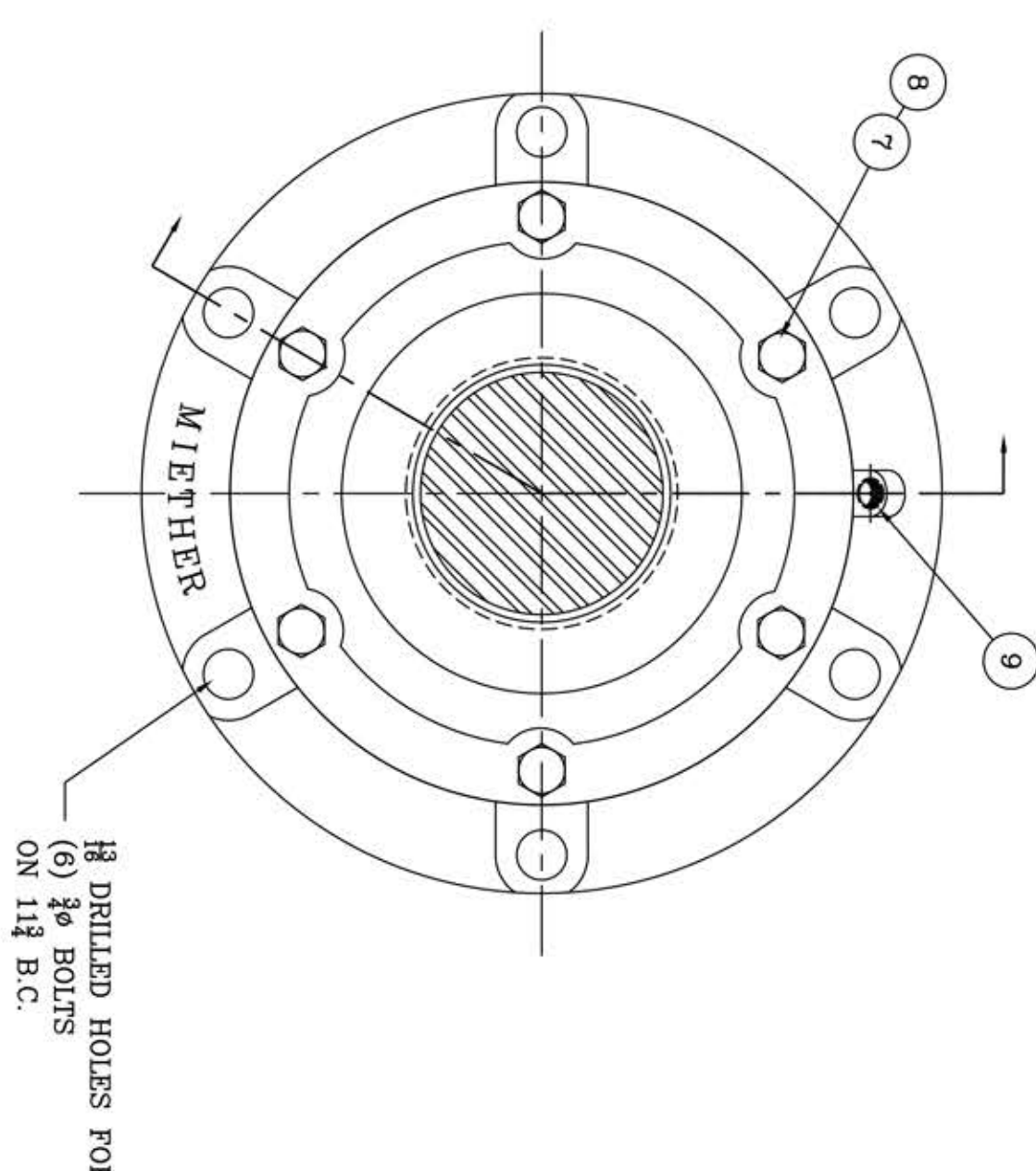
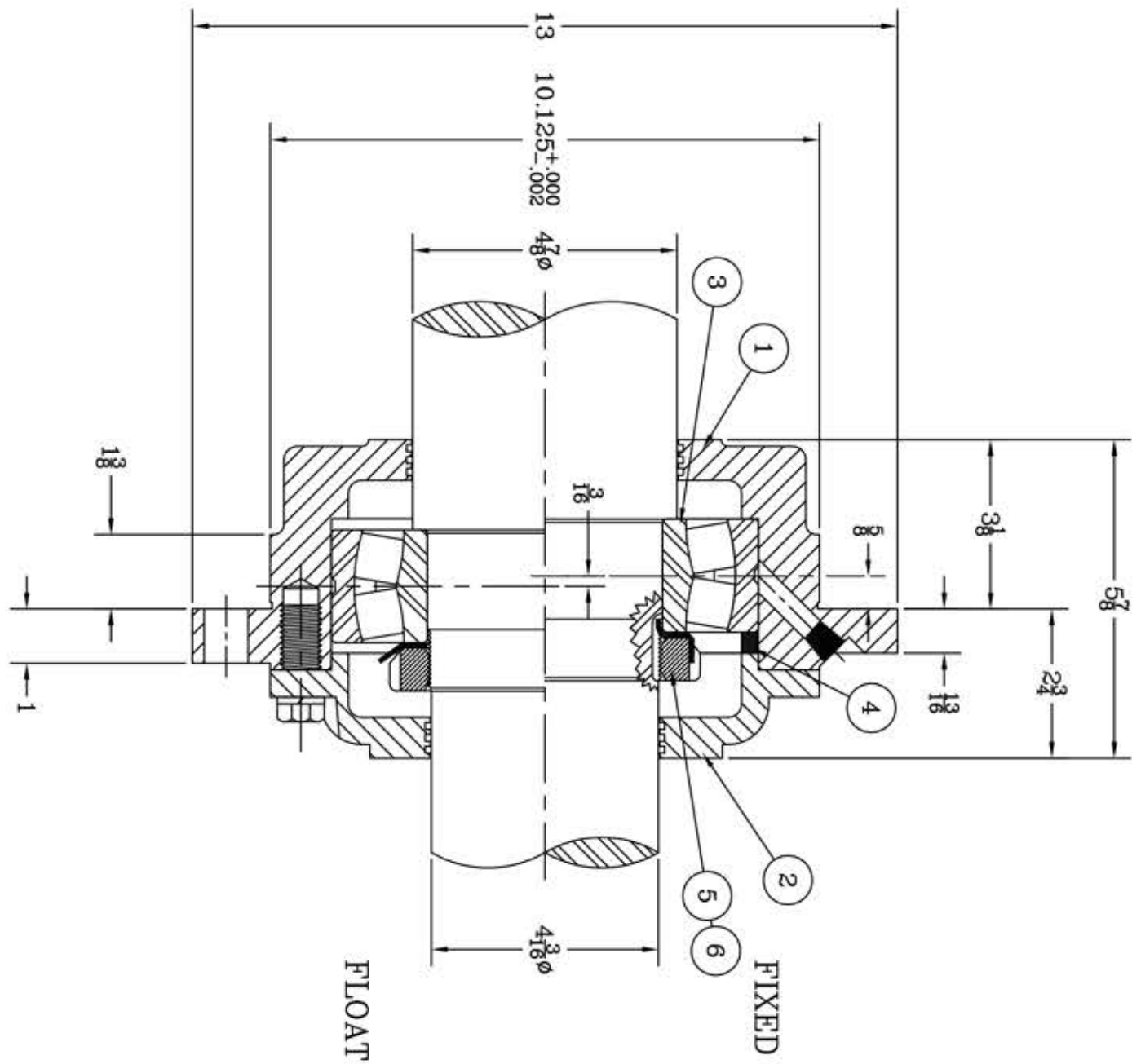


This drawing is the sole property of Miether Bearing Products and contains confidential and proprietary information. It is being provided to you for your use and may not be disclosed to any third party or used for any other purpose without Miether's prior written consent. The [materials] must be returned to the Company upon its demand. Your acceptance of these materials constitutes your acceptance of the foregoing terms.

C-15643



| ITEM | DESCRIPTION | DETAIL | REQUIRED |
|------|---------------------------|-----------------|----------|
| 1 | HOUSING HL-222 | C-15641 | 1 1 |
| 2 | ENDCAP KL-222 | C-15642 | 1 1 |
| 3 | SPHERICAL ROLLER BEARING | 22222/W 33 | 1 1 |
| 4 | STABILIZING RING SR-22-19 | A-10603 | 1 0 |
| 5 | LOCKNUT AN-22 | B-10415 | 1 1 |
| 6 | LOCKWASHER W-22 | ~~~~~ | 1 1 |
| 7 | CAP BOLT HEX. HEAD | 5-13 NC x 1 1/4 | 6 6 |
| 8 | LOCKWASHER | 1/2 SPLIT MED. | 6 6 |
| 9 | PIPE PLUG | 1/4-18 NPT | 1 1 |

REDRAWN ON COMPUTER
AR per KAB
2-4-04

REVISIONS

| SYMBOL | DESCRIPTION |
|--------|-------------|
| ✓ | REVISIONS |
| ∇ | REVISIONS |
| ∇ | REVISIONS |
| ∇ | REVISIONS |
| ∇ | REVISIONS |
| ∇ | REVISIONS |
| ∇ | REVISIONS |
| ∇ | REVISIONS |
| ∇ | REVISIONS |
| ∇ | REVISIONS |
| ∇ | REVISIONS |

AN ALCO INDUSTRIES COMPANY
BEARING PRODUCTS
ODESSA, TX. USA

| | |
|------------------|---------------|
| FCL 22222 | 04-14 x 04-03 |
| ASSEMBLY DRAWING | |
| SCALE HALF | ASSEMBLY NO. |
| DRAWN CJ | |
| DATE 12/9/72 | DRAWING NO. |
| CHK: | C-15643 |

TOLERANCE: UNLESS OTHERWISE SPECIFIED
FRACTIONS ± 1/32"
DECIMALS ± .005"
CASTING ± 1/16"
ANGLES ± 0° 30'
WELD ± 1/16"
A.I.S.I. STANDARD FINISHES